



**THE FACADE ACCESS
PACKAGE**

KAYDEESAYFA.CO.UK

SAFE ACCESS TO ALL AREAS OF THE BUILDING FACADE

Facade Access is required for the cleaning and maintenance of the building facade.

Facade Access system depends on the building type and design and can range from a simple abseil post to davit arms or abseil rails that go across the length of the building facade. The facade access requirement can be external or internal.

SOURCING

KaydeeSayfa have over 35 years experience in the sourcing and installation for commercial projects.

With KaydeeSayfa you get access to a proven supply chain of local and global manufacturers - With a wide range of facade access systems to match the building specification from a safety, functionality and design point of view.

SURVEY & DESIGN

INSTALL



SOURCE, DESIGN, SURVEY AND INSTALLATION



DELIVERING ON TIME, ON BUDGET



END TO END PROJECT MANAGEMENT

35

35+ YEARS EXPERIENCE IN COMMERCIAL PROJECTS



"The pandemic has brought a lot of challenges to everyone's operations, and despite this you've still regularly delivered on dates which we've set out throughout the project."

Construction Manager, Renaker

FACADE ACCESS SOLUTIONS

DAVIT ARMS

ABSEIL RAIL

ABSEIL POST

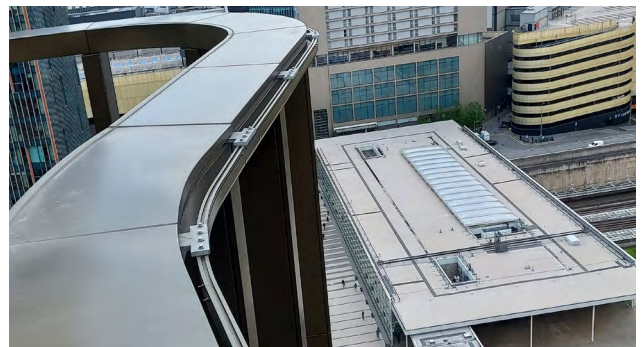
DAVIT ARMS

A Davit Arm is a crane like facade access system - designed for lifting and lowering personnel and materials. Davit Arms give the user safe access to the facade over the edge of the building, without putting load onto the building parapet. Davit arms can be removed from the base when not in use.



ABSEIL RAIL

Abseil rails provide vertical and horizontal access across the building facade. Abseil rails can cover the perimeter of the building and provides continuous access without the need to disconnect. Abseil Rail has minimal visual impact on the building design with options to colour match.



ABSEIL POST

An abseil post is also known as an abseil point or anchor. It provides a single abseil point on the edge of the building - It's relatively small size compared to other systems make it an ideal solution in areas where space on the roof is limited. Abseil posts can be fit to a number of roof types.



MOBILE DAVITS

Mobile Davits are not a permanent facade access solution - but provides a flexible option where other facade access systems are not suitable. Mobile Davits use a counterweight system and do not require permanent fixing or penetration of the roof surface.



DESIGN OPTIONS

Most facade access systems have design options to reduce the visual impact and also improve safety. Davit bases can be hidden under hatches in areas of high traffic. Abseil rails can be colour matched to reduce visual impact. Available options depend on building design.



TESTING & MAINTENANCE

KaydeeSayfa also provide testing and maintenance of height safety and facade access systems. Testing of such systems every 6-12 months is a legal requirement. Using the original installer can help provide an extended product warranty and make remedial works simpler.



WHY KAYDEESAYFA?

With KaydeeSayfa you get the advantage of dealing with one company, one contract for multiple specialist construction packages.

You also get access to a proven supply chain that extends across the world. KaydeeSayfa have partnered with innovative and reliable suppliers over the past 35 years to bring our customers the quality solutions that meet their building requirements.

We have worked together with UK's leading contractors since 1985 - Our experience in project management and installation will ensure your project is completed to specification, on time and on budget. Over the years we have delivered over 3,000 projects - with our largest and most complex project worth over £2.2 million.

Speak to a member of our team today to find out more about our solutions.



ACCREDITATIONS
AND AFFILIATIONS

GET IN TOUCH

KAYDEESAYFA.CO.UK

ENQUIRIES@KAYDEESAYFA.CO.UK

JUBILEE HOUSE,
3 GELDERS HALL ROAD,
SHEPSHED, LOUGHBOROUGH,
LE12 9NH

+44 1509 502 155

