

TEXTURED BLACKOUT CURTAIN FABRIC WITH A FLUOROCARBON
STAIN RESISTANT AND WATER REPELLENT FINISH

SPECIFICATION

DESIGN	FR BLACKOUT
USAGE	DRAPERY
COMPOSITION	100% POLYESTER
WEIGHT	415 GSM
FIRE RETARDANCY	BS 5867 PT 2B, IMO, CIG & MATCH
LIGHT FASTNESS	5
COLOUR FASTNESS	3.4
ABRASION	100,000
WIDTH	280CM & 140 CM*

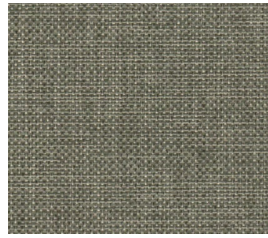
*available at 280cm (118") to order



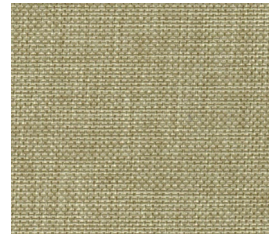
COLOURS



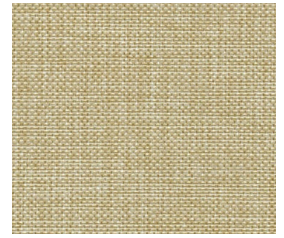
Linen



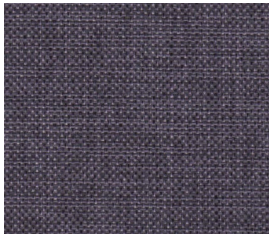
Stone



Beige



Cream



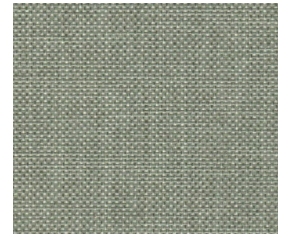
Amethyst



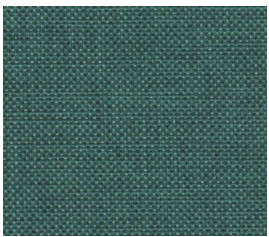
Ice Blue



Chocolate



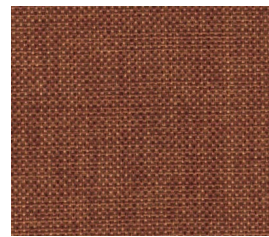
Grey



Ocean*



Petrol*



Rust*



Gold*



Blue*



Pistachio*



Canary*

*Premium Colours available at an additional cost with extended lead times.

ENQUIRIES@KAYDEESAYFA.CO.UK

Images & Colours for illustrative purposes only. KaydeeSayfa reserves the right to update specification without notice.